

CoolSpeed[®] mini

Affordable evolutionary high rotation
speeds up to 75,000 RPM!

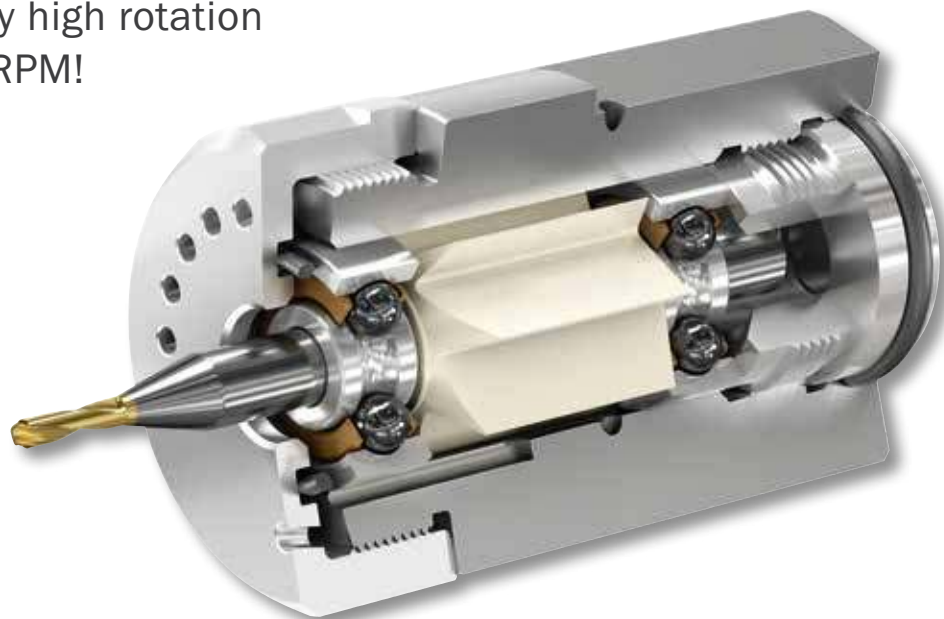
In operation:



Minimal investment
Fits in standard toolholders
High accuracy, low runout
Extended tool life

CoolSpeed® mini

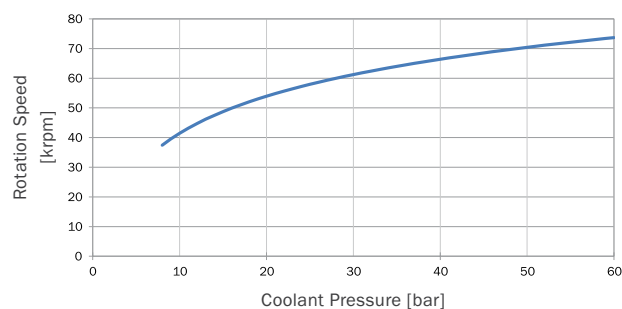
Affordable evolutionary high rotation speeds up to 75,000 RPM!



Max. RPM	75,000
Supports tool shanks Ø	3 mm, 4 mm, 6 mm
Driven by	coolant, oil, air
Coolant pressure	10-60 bar (145-870 PSI) for CoolSpeed® mini (EX)
Air pressure	3-7 bar (44-101 PSI) for CoolSpeed® mini Air

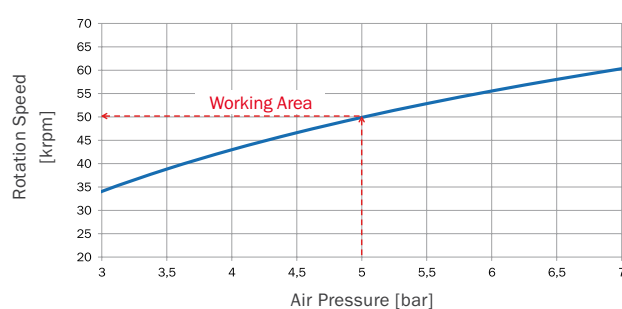
CoolSpeed® mini (EX)

Rotation Speed/Coolant Pressure

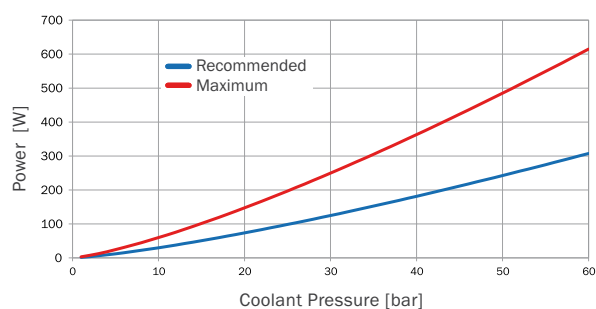


CoolSpeed® mini Air

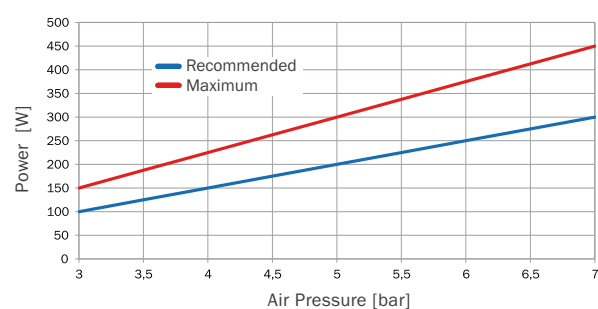
Rotation Speed/Air Pressure



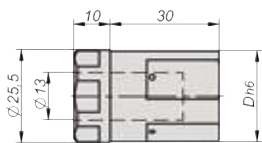
Power/Coolant Pressure



Power/Air Pressure



Applications: Milling | Drilling | Grinding | Chamfering | Engraving



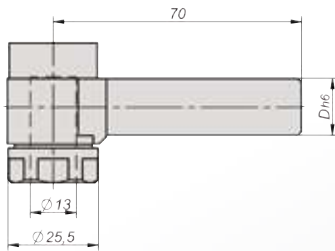
CoolSpeed® mini

D = Ø25 mm 700100025



CoolSpeed® mini Air

D = Ø25 mm 700200025



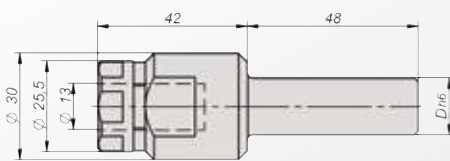
CoolSpeed® mini 90

D = Ø16 mm 700500016



CoolSpeed® mini Air 90

D = Ø16 mm 700600016



CoolSpeed® mini (EX)

D = Ø16 mm 700300016



Set (2 bearings, 1 turbine)

Ø3 mm	709112003
Ø4 mm	709112004
Ø6 mm	709112006



Assembly device

Ø3 mm	709212003
Ø4 mm	709212004
Ø6 mm	709212006



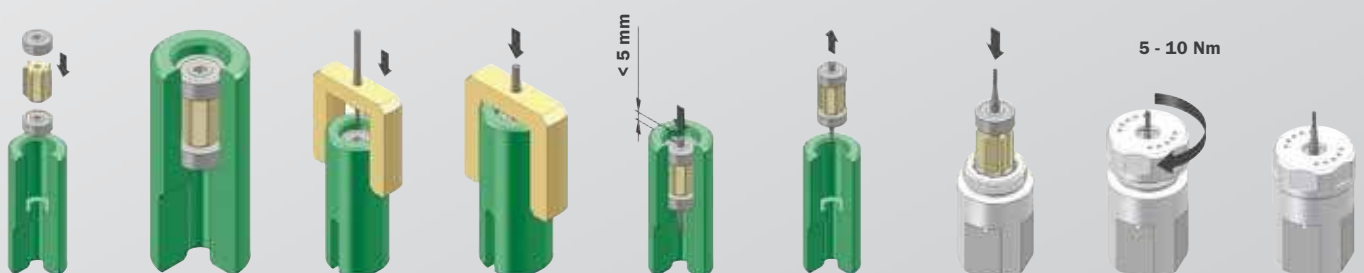
Pressure measurement adapter

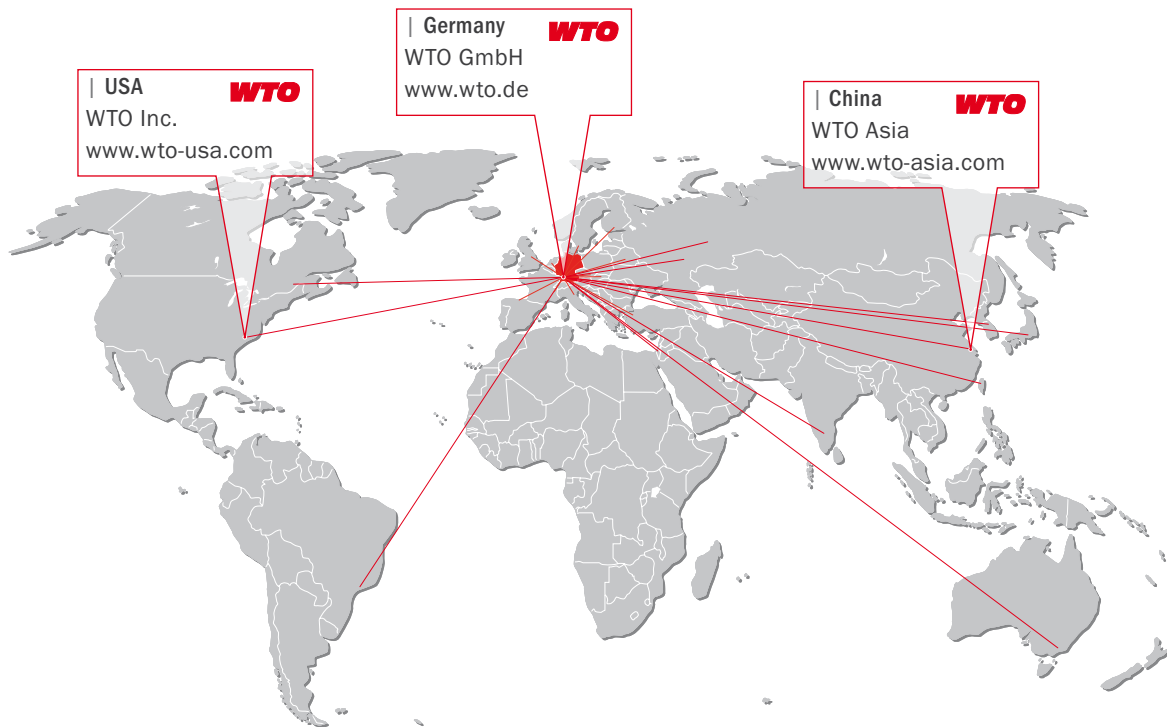
Ø25 mm 709014025

Manometer

709914060

Assembly





| **USA**
WTO
WTO Inc.
www.wto-usa.com

| **Germany**
WTO
WTO GmbH
www.wto.de

| **China**
WTO
WTO Asia
www.wto-asia.com

WTO GmbH
Auf der oberen Au 45
77797 Ohlsbach
Germany

WTO USA
13900 S Lakes Dr Ste F
Charlotte NC 28273-7119
USA

WTO Asia
Room 109-110, Building 2
No. 228 Banting Road
Jiuting Town,
Songjiang District
201615 Shanghai
China

Our distribution partners. Competence right there.

| **Australia**
Dimac Tooling Ltd.
sales@dimac.com.au

| **Finland**
Suomen Terästuonti Oy
myynti@stt.as

| **Korea**
WTO Office Korea
is.chon@wto-korea.com

| **Slowakia**
ALBA precision s.r.o.
albaprecision@albaprecision.sk

| **Belarus**
JSC "PMI Engineering"
tool@pmi.by

| **France**
Philippe Tagliafero
pta@wto.de

| **Mexico**
Workholding Engineering De México
info@wem.com.mx

| **Spain**
ITALMATIC, S.A.
italmatic@italmatic.es

| **Brazil**
TF2
tfdois@tfdois.com.br

| **Great Britain**
Cutwel Ltd.
sales@cutwel.net

| **Netherlands**
Klein Tooling B.V.
verkoop@kleintooling.nl

| **Sweden**
Komet Scandinavia AB
scandinavia@kometgroup.com

| **Canada**
Mittmann Industrial Inc.
info@mittmann.com

| **India**
A.H. Rao
ahr.rao@gmail.com

| **Norway**
Helge Karlsen Verktøy og Maskin AS
hkvm@hkvm.no

| **Switzerland**
Utilis AG
info@utilis.com

| **China**
Shanghai Gangde
wtocando@yahoo.com

| **Israel**
E.Y.A.R. Ltd.
yehoshua@eyar.co.il

| **Poland**
ARCO Andrzej Rudenko
info@arcotools.pl

| **Taiwan**
Kaiko Co., Ltd.
info@kaiko.com.tw

| **Czech Republic**
ALBA precision, spol. s.r.o.
info@albaprecision.cz

| **Italy**
Prymark srl
commerciale@prymark.it

| **Romania**
SC Elif Trading SRL
bulent.ozkan@eliftrading.com

| **Turkey**
MYK CNC MAKINA SAN. VE
huseyin.tatlidil@mykcnc.com.tr

| **Denmark**
Tool-part
cj@tool-part.dk

| **Japan**
NK Works Co. Ltd.
k_samba@nk-works.co.jp

| **Russia**
WTO Office Russia
office@wto-russia.com

| **Ukraine**
„LLC“ SPA Stankopromimport
info@phoenix-ua.com