



**NEW**

## HDM690 Vise

The first 6 inch pull type  
vise with a 9 inch opening

Top down  
bolting for less  
deflection and  
ease of cleaning

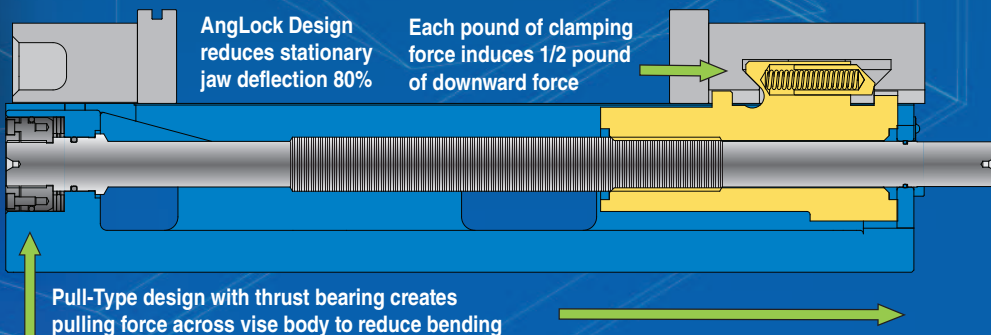
GrooveLock® jaw  
and workstop included

Patent Pending

HD style Quick Change  
movable jaw

Pull type  
design for  
higher  
accuracy

KURT Anglock® design  
combined with pull-type  
design provides ultimate  
rigidity and accuracy



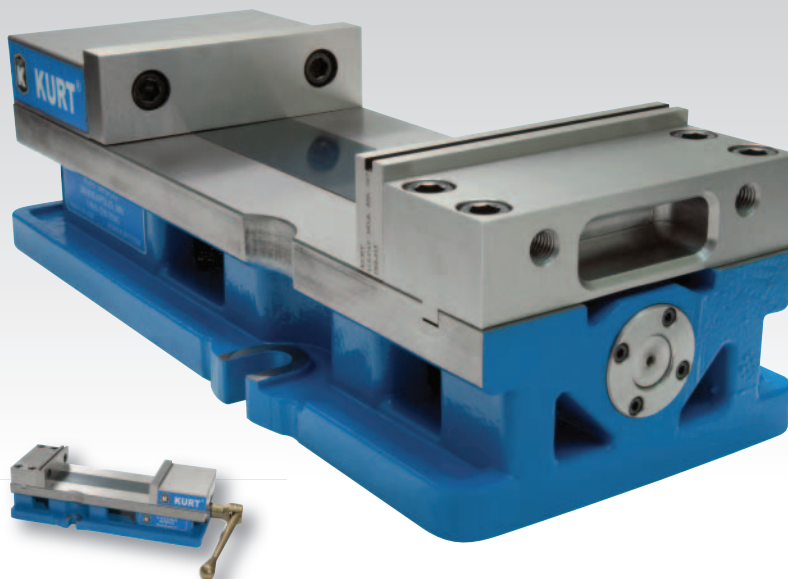


# HDM690 VISE **NEW**

PATENT PENDING

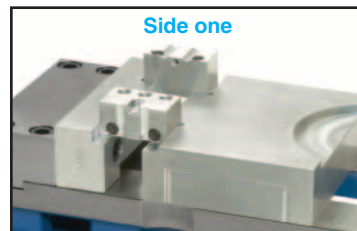
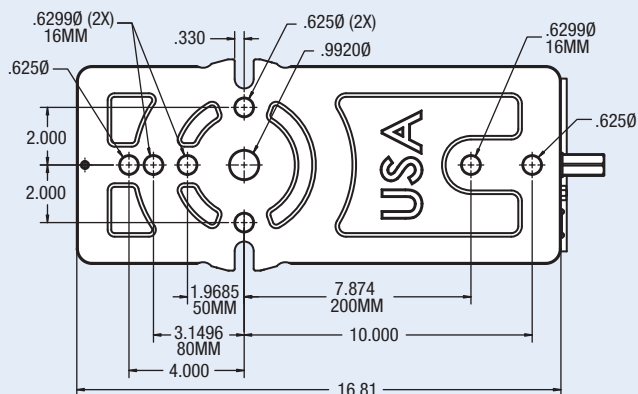
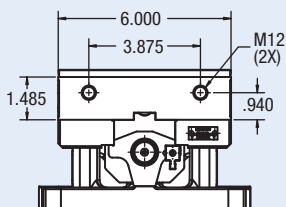
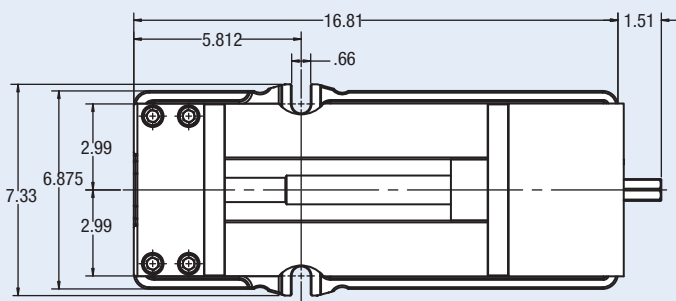
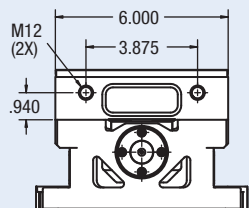
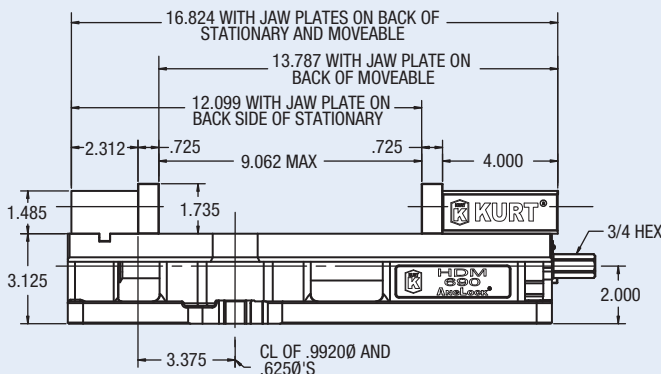
## HDM690 Vise Features:

- A full 9 inch opening between jaws.
- Less deflection of stationary jaw. Wider more stable stationary jaw equals less deflection.
- Stationary jaw bolts down from top. No need to remove from table to disassemble vise. Bolting the stationary from the top reduces the stress in the body and will stay flatter after assembly.
- Narrower body width allows more vises in the same work envelope.
- Taller body design equals less deflection under clamping loads.
- Bolts and locates directly on standard grid plates: 40mm, 50mm or 2 inch.
- Pull type body design reduces stress in the body resulting in more accurate clamping.
- Quick change movable jaw. The HD platform movable jaw allows for quick change and carvability to hold that odd shaped part.
- GrooveLock® jaw and workstop included.
- Adaptable to hydraulic. Uses sine keys for alignment.
- Swivel base available.

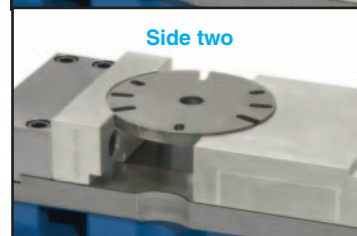


Machineable jaws are reversible to provide multiple setups for similar or dissimilar parts.

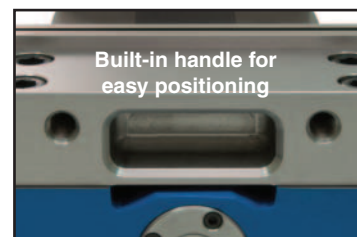
Torque-Ft. Lbs.	Clamping Force LBS.
10	975
20	1,625
30	2,400
40	3,250
50	3,700
60	4,275
70	4,700
80	5,250
90	6,000



Side one



Side two



Built-in handle for easy positioning



Convenient workstop mounting when not in-use

Printed in USA © Copyright. All rights reserved  
LIT.FLY.HDM690.10.01