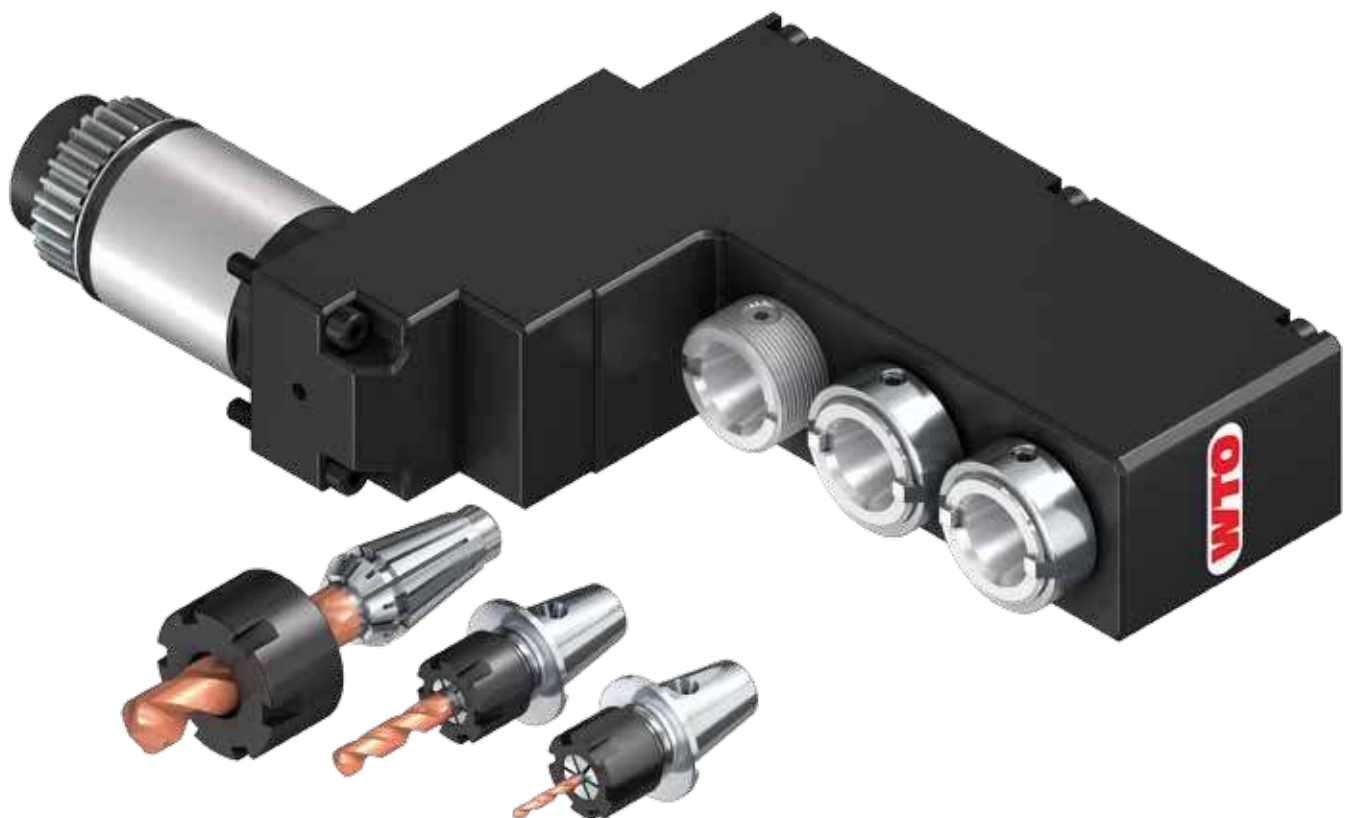


nanoFlex[®]

The new quick change system with
very compact design and very high precision.

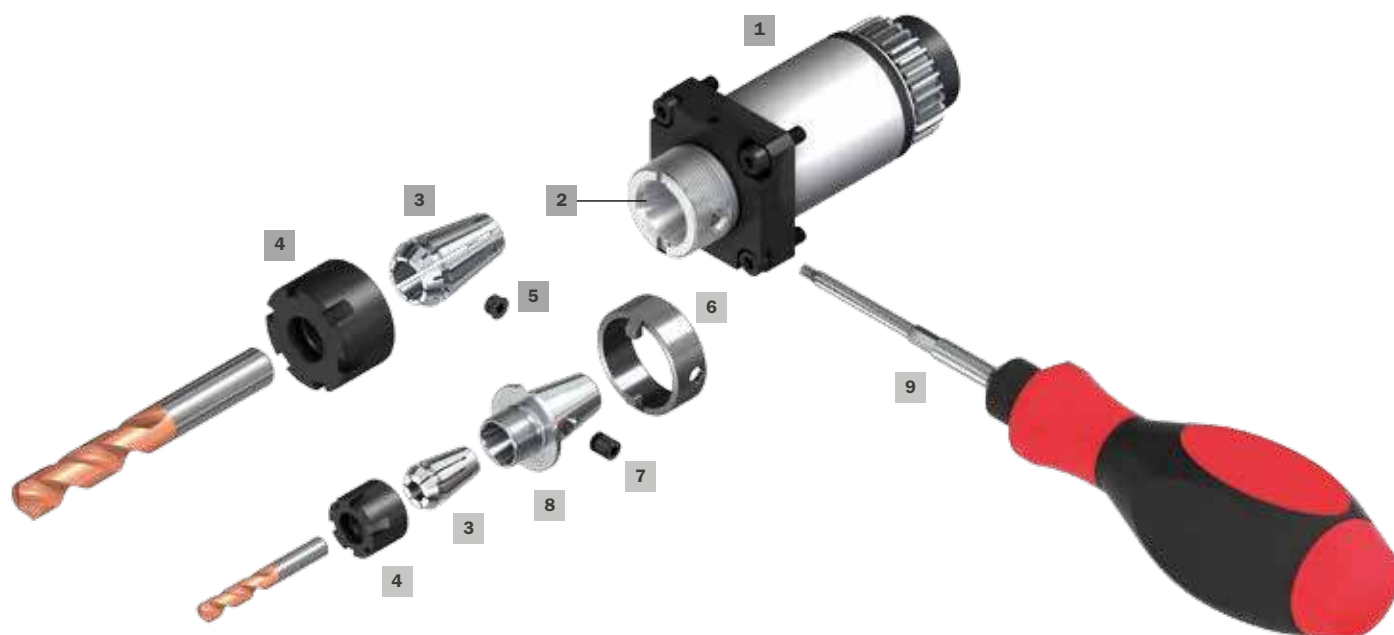
Minimal investment, maximal expandability.



Designed
for
Swiss Type
Lathes

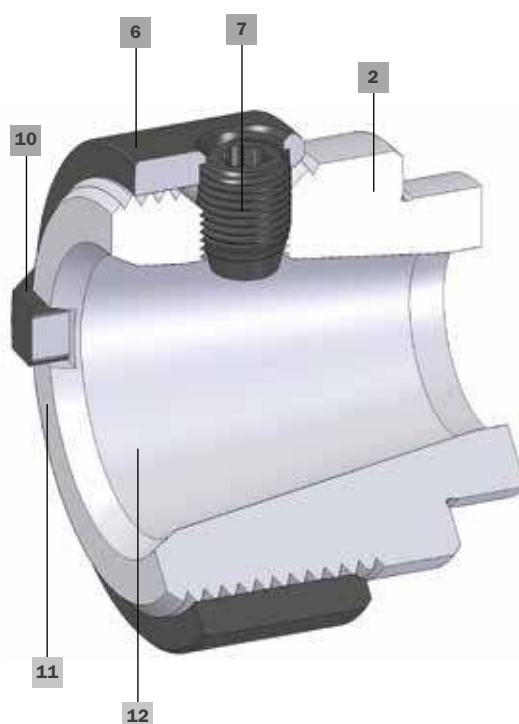
nanoFlex[®]

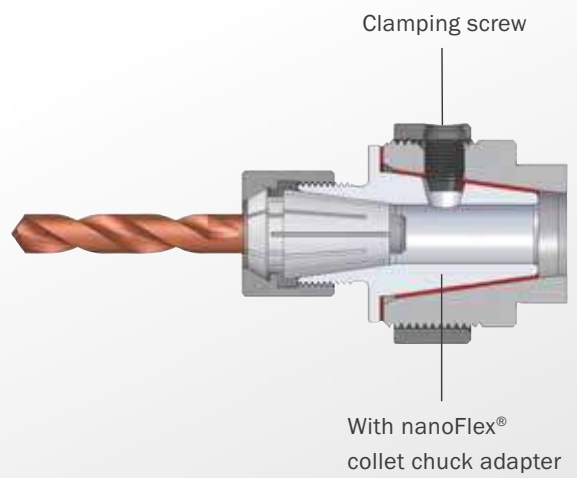
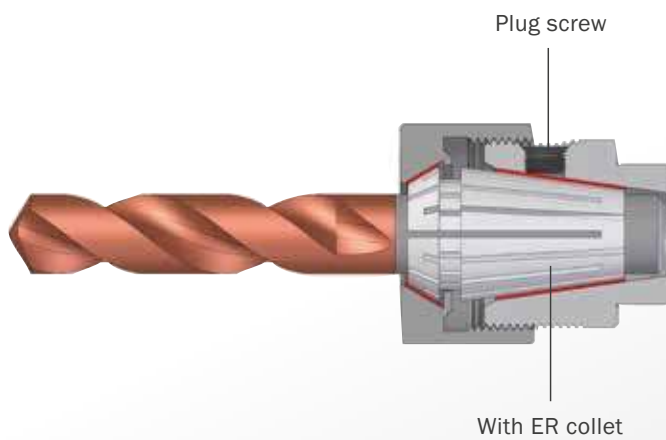
The perfect combination: ER collet chuck and modular quick change system in one toolholder.



nanoFlex[®] chuck ready for adapter clamping.

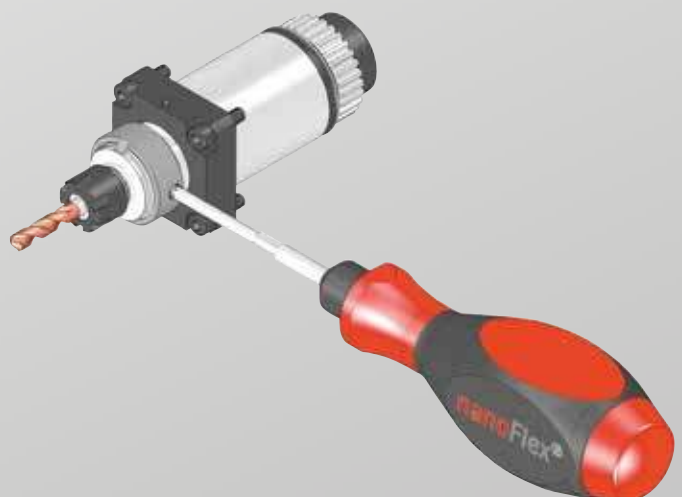
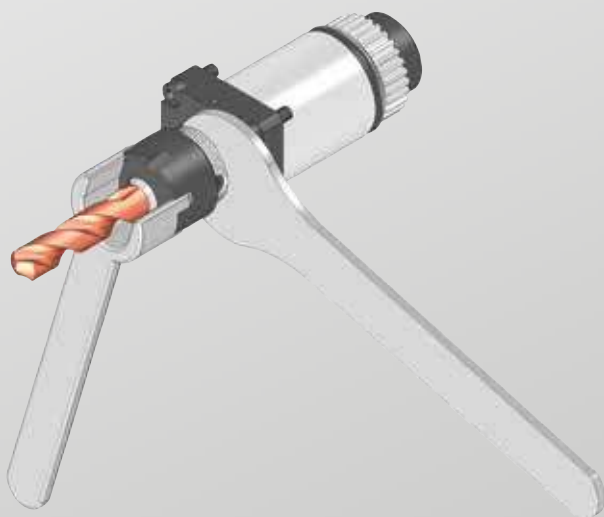
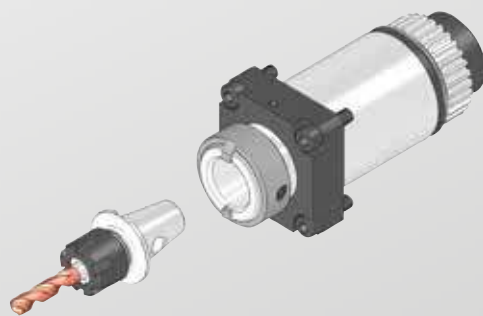
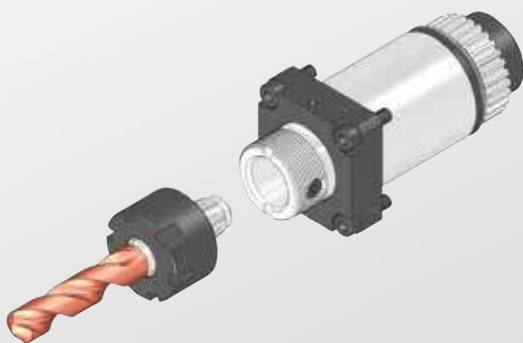
- 1 - Toolholder
- 2 - nanoFlex[®] chuck
- 3 - ER collet
- 4 - Collet nut
- 5 - Screw to plug clamping screw hole
- 6 - Drive ring for torque transmission of the nanoFlex[®] quick change adapter
- 7 - nanoFlex[®] clamping screw
- 8 - nanoFlex[®] quick change adapter
- 9 - One-hand wrench with set torque value to clamp and unclamp the nanoFlex[®] quick change adapters
- 10 - Drive dogs for torque transmission
- 11 - Axial contact surface for high stiffness of the nanoFlex[®] adapter
- 12 - Taper for ER collets and nanoFlex[®] adapter





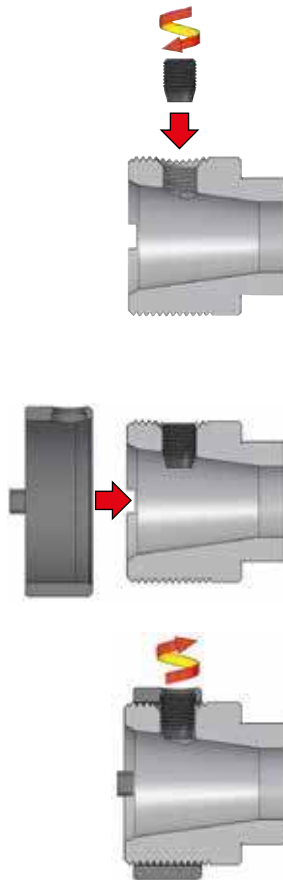
Regular tool clamping using collets.

Quick change using nanoFlex® adapter.

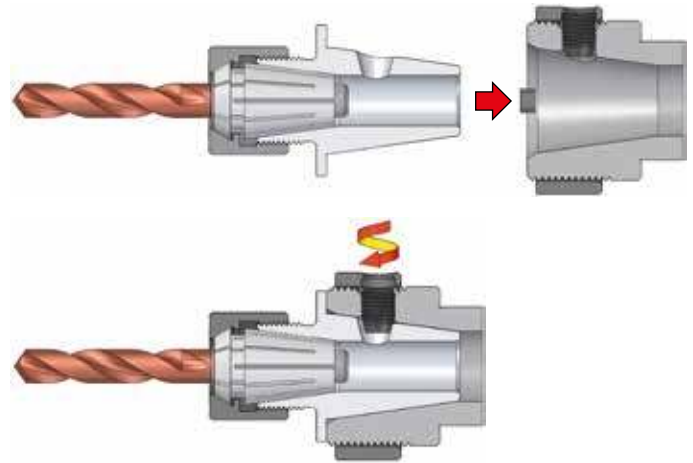


Handling using adapters

Preparation

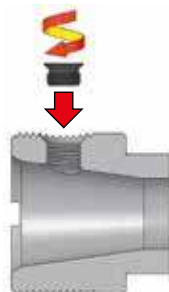


Adapter clamp and unclamp

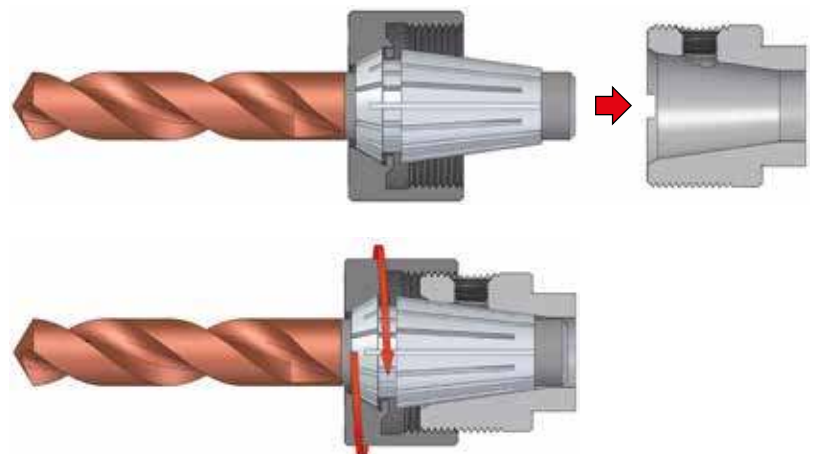


Handling using collets

Preparation



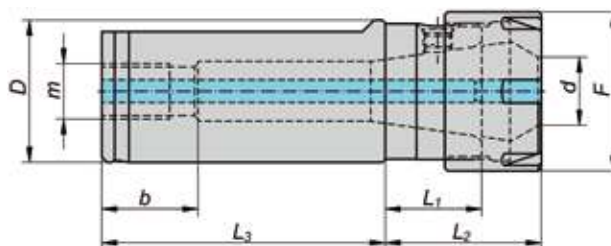
Collet clamp and unclamp






Cylindrical shank holder

with cylindrical shank and flat.

For flexible use of ER collets and nanoFlex® adapters in boring bar and sleeve holders.

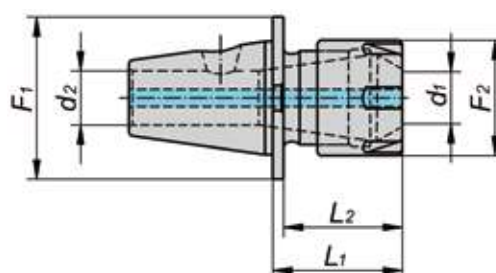




Size	Item No.	D	F	d min.	d max.	L ₁	L ₂	L ₃	m	b			
ER-16NF	330016025N	25	28	0.5	10	17	27.5	50	G1/8"	12	200516000N	107520005	337316000N

Dimensions in mm

Collet chuck adapter

DIN 6499, ISO 15488

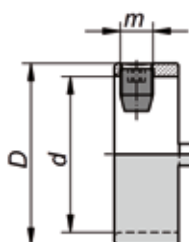




Size	Item No.	F ₁	d ₁ min.	d ₁ max.	d ₂	F ₂	L ₂	L ₁	Nm	Collet size		
ER-16NF	320016007N	22.5	0.5	7	7.5	16	16.5	18	16	ER 11	200511000	107511005

Dimensions in mm

Drive ring

for use with nanoFlex® adapters, clamping screw included

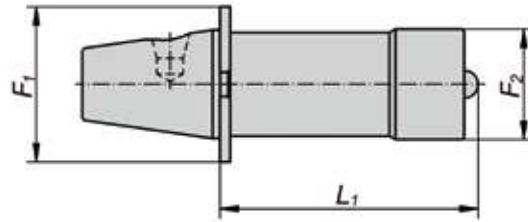


Size	Item No.	D	d	m		
ER-16NF	337116000N	28	24	M5x0.5	337216000N	107716000N

Dimensions in mm

Preset master adapter

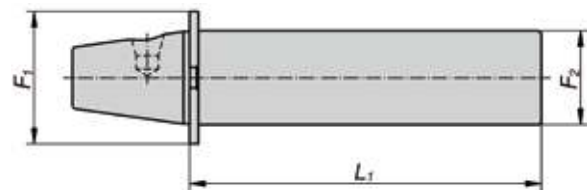
etched with actual gauge length measurement



Size	Item No.	F ₁	F ₂	L ₁
ER-16NF	339016000N	22.5	16	37.5

Dimensions in mm

Master gauge






Size	Item No.	F ₁	F ₂	L ₁
ER-16NF	339116000N	22.5	16	60

Dimensions in mm

Mounting device nanoFlex®

for easy tool change of nanoFlex® adapters on the work bench





Size	Item No.	D	F	L			
ER-16NF	338216000N	50	28	35	107716000N	337116000N	337216000N

Dimensions in mm

Torque screwdriver

to clamp the nanoFlex® adapter with one hand



Size	Item No.		Nm	
ER-16NF	107716000N	10IP	2.5	109330

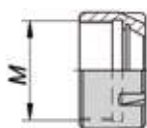
Dimensions in mm


Note:

Replacable blade.

Collet nut ERNF

suitable for nanoFlex® spindle collet chuck
DIN 6499, ISO 15488





Size	Item No.	M	recommended torque Nm	
ER-16NF	200516000N	M 24 x 1.00	45	107520005

Dimensions in mm

Clamping screw ERNF

to clamp the nanoFlex® adapters





Size	Item No.		Nm	
ER-16NF	337216000N	10IP	2.5	107716000N

Dimensions in mm

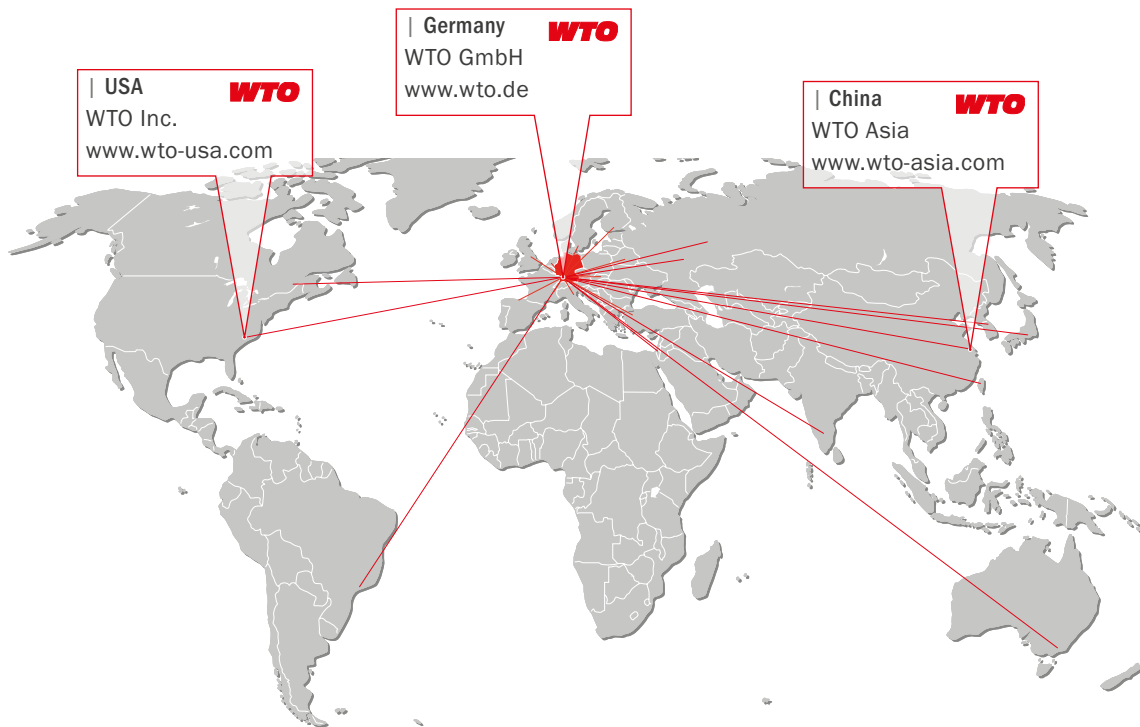
Plug screw ERNF

to plug the clamping screw hole



Size	Item No.		Nm	
ER-16NF	337316000N	10IP	2.5	107716000N

Dimensions in mm



| **USA**
WTO
WTO Inc.
www.wto-usa.com

| **Germany**
WTO
WTO GmbH
www.wto.de

| **China**
WTO
WTO Asia
www.wto-asia.com

WTO GmbH
Auf der oberen Au 45
77797 Ohlsbach
Germany

WTO USA
13900 S Lakes Dr Ste F
Charlotte NC 28273-7119
USA

WTO Asia
Room 109-110, Building 2
No. 228 Banting Road
Jiuting Town,
Songjiang District
201615 Shanghai
China

Our distribution partners. Competence right there.

| **Australia**
Dimac Tooling Ltd.
sales@dimac.com.au

| **Finland**
Suomen Terästuonti Oy
myynti@stt.as

| **Korea**
WTO Office Korea
is.chon@wto-korea.com

| **Slovakia**
ALBA precision s.r.o.
albaprecision@albaprecision.sk

| **Belarus**
JSC "PMI Engineering"
tool@pmi.by

| **France**
Philippe Tagliafero
pta@wto.de

| **Mexico**
Workholding Engineering De México
info@wem.com.mx

| **Spain**
ITALMATIC, S.A.
italmatic@italmatic.es

| **Brazil**
TF2
tfdois@tfdois.com.br

| **Great Britain**
Cutwel Ltd.
sales@cutwel.net

| **Netherlands**
Klein Tooling B.V.
verkoop@kleintooling.nl

| **Sweden**
Komet Scandinavia AB
scandinavia@kometgroup.com

| **Canada**
Mittmann Industrial Inc.
info@mittmann.com

| **India**
A.H. Rao
ahr.rao@gmail.com

| **Norway**
Helge Karlsen Verktøy og Maskin AS
hkvm@hkvm.no

| **Switzerland**
Utilis AG
info@utilis.com

| **China**
Shanghai Gangde
wtocando@aliyun.com

| **Israel**
E.Y.A.R. Ltd.
yehoshua@eyar.co.il

| **Poland**
ARCO Andrzej Rudenko
info@arcotools.pl

| **Taiwan**
Kaiko Co., Ltd.
info@kaiko.com.tw

| **Czech Republic**
ALBA precision, spol. s.r.o.
info@albaprecision.cz

| **Italy**
Prymark srl
commerciale@prymark.it

| **Romania**
SC Elif Trading SRL
bulent.ozkan@eliftrading.com

| **Turkey**
MYK CNC MAKINA SAN. VE
huseyin.tatlidil@mykcnc.com.tr

| **Denmark**
Tool-part
cj@tool-part.dk

| **Japan**
NK Works Co. Ltd.
k_samba@nk-works.co.jp

| **Russia**
WTO Office Russia
office@wto-russia.com

| **Ukraine**
„LLC“ SPA Stankopromimport
info@phoenix-ua.com